

COLOR FORMULATION

GUIDE

ARTISAN *Accents*



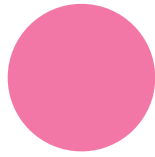
GETTING THE **PERFECT** COLOR HAS NEVER BEEN EASIER!
To Order Visit **WWW.ICINGIMAGES.COM**

COLOR FORMULATION GUIDELINES

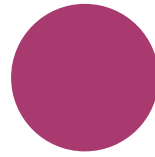
PINKS



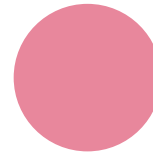
WATERMELON
2 parts pink,
1 part red



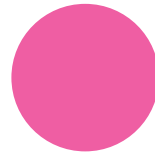
DUSTY ROSE
4 parts pink,
1 part brown,
1 part purple



MAGENTA
12 parts pink,
1 part black

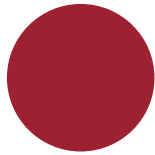


ROSEWOOD
3 parts pink,
1 part brown

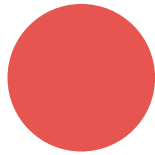


FUCHSIA
8 parts pink,
1 part purple

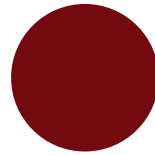
REDS



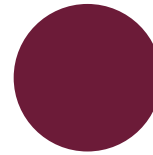
PAPRIKA
6 parts red,
3 parts orange,
1 part brown



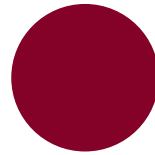
CORAL
2 parts red,
1 part pink,
1 part yellow



SANGRIA
8 parts red,
4 parts pink,
1 part black

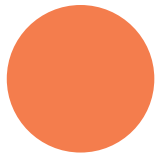


MERLOT
4 parts red,
2 parts pink,
1 part purple



GARNET
12 parts red,
12 parts pink,
1 part purple

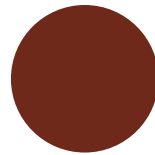
ORANGES



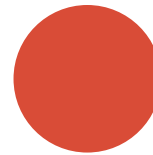
PUMPKIN SPICE
4 parts orange,
1 part brown



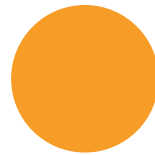
SALMON
1 parts orange,
2 parts pink



BRICK
2 parts orange,
1 part red,
1 part brown

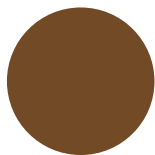


ISLAND PUNCH
2 parts orange,
1 part red



MANGO
1 part orange,
1 part yellow

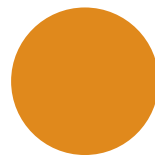
YELLOWS



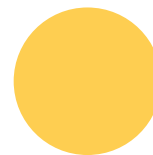
GOLD
2 parts yellow,
1 part brown



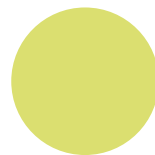
MARIGOLD
2 parts yellow,
1 part orange



TUSCAN SUN
4 parts yellow,
2 parts orange,
1 part brown



BANANA
12 parts yellow,
1 part brown

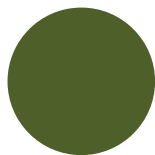


SOUR LEMON
8 parts yellow,
1 part green

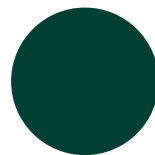
GREENS



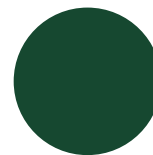
LIME
1 part green,
1 part yellow



OLIVE
2 parts green,
1 part orange



HUNTER GREEN
2 parts green,
2 parts blue,
1 part black



PINE
2 parts green,
1 part blue,
1 part black



FOREST
4 parts green,
1 part brown

Shown are the 50 main color groupings. Each color has a gradient bar, which demonstrates the intensity range of each color.

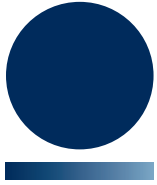
BLUES

PURPLES

BROWNS

GREYS

SKIN TONES



NAVY
4 parts blue,
2 parts purple,
1 part black



EUCALYPTUS
2 parts blue,
1 part green,
1 part black



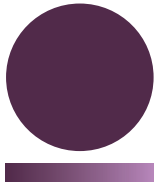
CORNFLOWER
1 part blue,
1 part purple



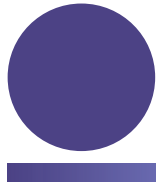
TURQUOISE
3 parts blue,
1 part green



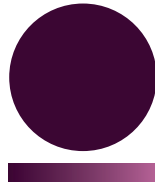
AQUAMARINE
2 parts blue,
1 part black



BLACK BERRY
1 part purple,
1 part black,
1 part red,
2 parts pink



PERIWINKLE
2 parts purple,
1 part blue



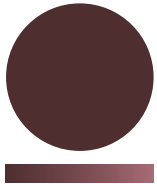
EGGPLANT
1 part purple,
2 parts pink,
1 part red



GRAPE
2 parts purple,
4 parts pink,
1 part black



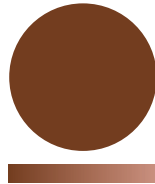
HEATHER
4 parts purple,
1 part black



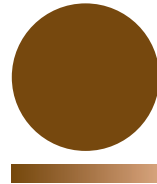
ESPRESSO
2 parts brown,
1 part red,
1 part black



CAROB
4 parts brown,
1 part black,
1 part green



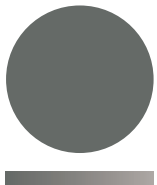
GINGERBREAD
2 parts brown,
1 part orange



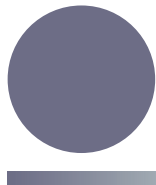
TAWNY
2 parts brown,
1 part yellow



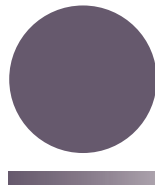
PENNY
1 part brown,
1 part red



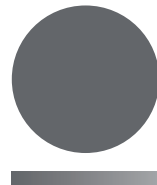
WARM GREY
2 parts black,
1 part brown



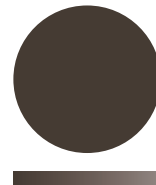
STEEL GREY
4 parts black,
1 part blue



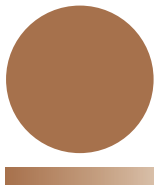
GRAPHITE
3 parts black,
1 part purple



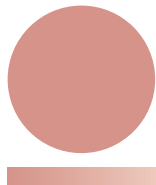
CLAY
4 parts black,
1 part green



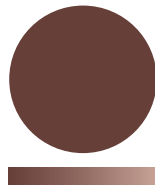
TAUPE
1 part black,
1 part brown



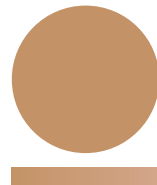
1
3 parts brown,
1 part green,
1 part yellow



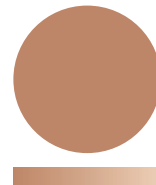
2
2 parts brown,
1 part pink,
1 part yellow,
1 part green



3
2 parts brown,
1 part black,
1 part pink



4
2 parts brown,
1 part yellow



5
3 parts brown,
3 parts yellow,
1 part black

The depth and shade of color for each formulation will depend on how much you use. For a more intense color use more, less intense, use less.

COLORS & FLAVORS AS BOLD AS YOUR ART

10 SIMPLE GUIDELINES

1. Colors are mixed by using “parts.”
2. Parts can be any measurement. For example, a large squeeze, a drop, a dip of a toothpick, or anything in between. Start lighter.
3. Artisan Accents colors are very concentrated; it’s best to use less color at first...more can always be added, but you can’t take it away.
4. Coloring is simple, the more color you use the darker the color, the less color you use the lighter the color. For example: less color is required for cake batter, more is needed to color fondant.
5. Don’t stress out! Mixing colors is FUN, and you can adjust your color by adding a little bit more of one color in the recipe.
6. There are no limitations to the colors you can create.
7. The depth of color for each formula will depend on how much you use. If you want a more intense color use more.
8. All colors can go together.
9. Primary colors are red, yellow and blue. Secondary colors are green, orange purple. These are created by mixing two primary colors. Tertiary colors are created by mixing primary and secondary. The mixing of color possibilities is endless.
10. Be Adventurous!

It’s easy and cost effective to mix your own colors! You can make hundreds of vibrant, beautiful colors with just our core 10 colors.



Go to: www.artisanaccents.com/color to see Artisan Accents Color Theory video.



280 NORTH MIDLAND AVE | SADDLE BROOK, NJ 07663 | 201.600.3717 | INFO@ARTISANACCENTS.COM

WWW.ARTISANACCENTS.COM

To Order Visit WWW.ICINGIMAGES.COM